



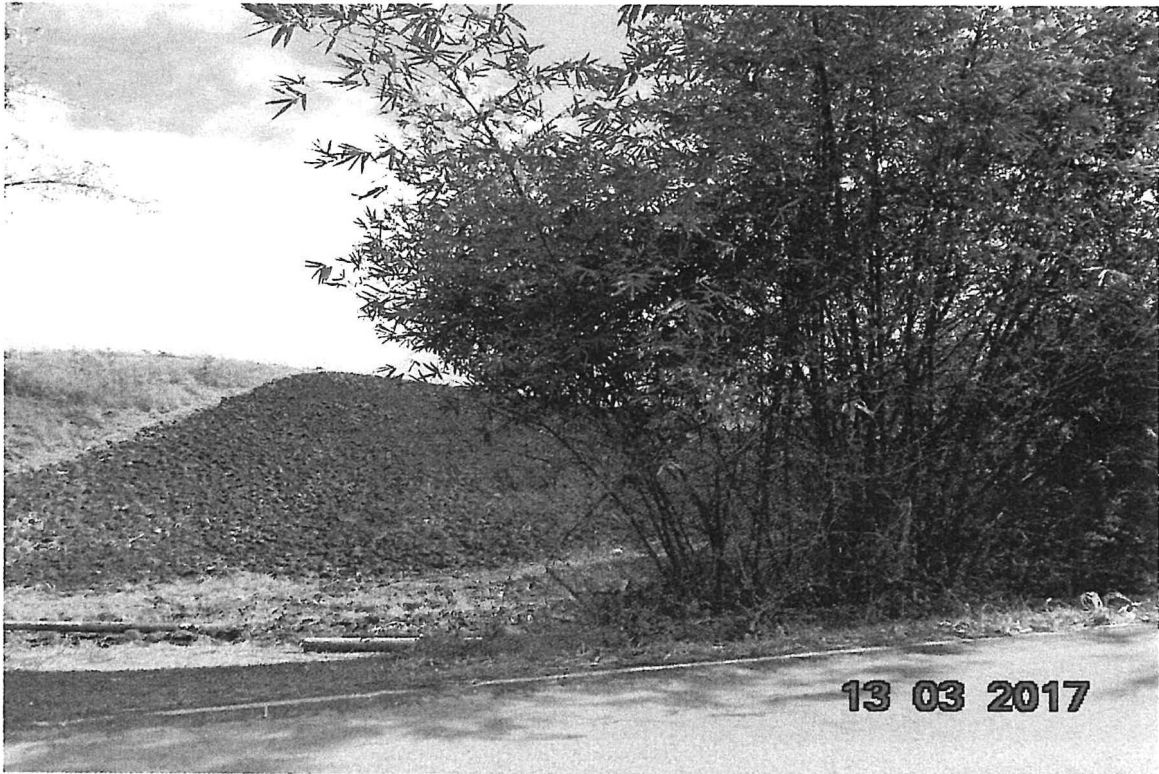
Agricultural Development Bank
Growing stronger together

0.8055 ha of State Leased Land
(0.8056 ha as per cadastral sheet)

Situated at: Lot #206 Road Reserve,
Cedar Hill Estate

PRINCES TOWN

PHOTOGRAPHIC VIEWS OF LOT NO. 206 ON A ROAD RESERVE,
CEDAR HILL ESTATE, PRINCES TOWN



LOOKING NORTH-EAST



LOOKING NORTH

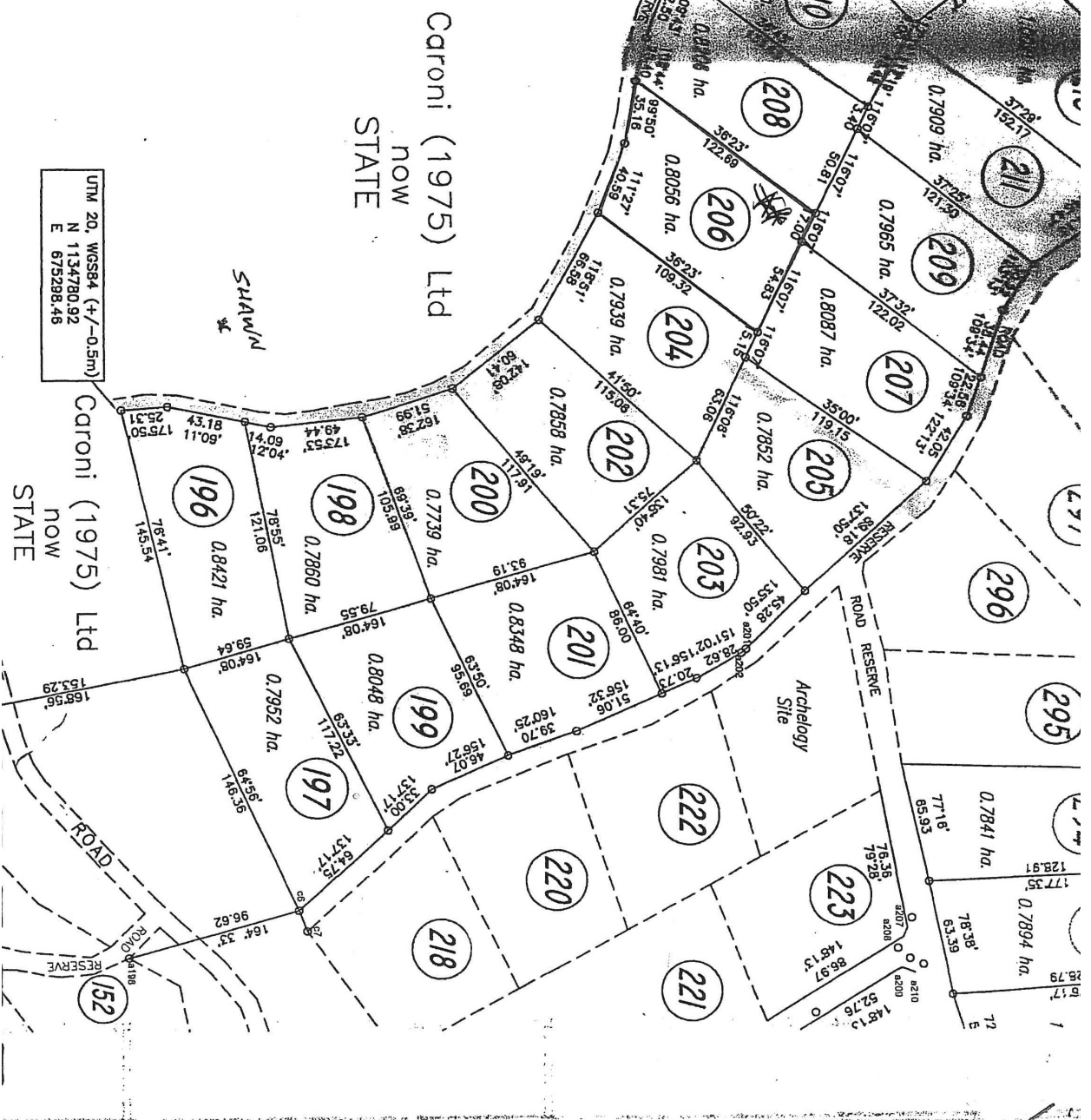
PHOTOGRAPHIC VIEW OF IMMEDIATE NEIGHBOURHOOD AT CEDAR HILL ESTATE,
PRINCES TOWN



LOOKING NORTH-WEST

W-

ARCLINE	BEARING	DISTANCE	RADIUS
0201-0202	140° 02'	3.30	
0203-0204	127° 00'	16.31	
0205-0206	08° 00'	9.81	5.00
0208-0209	34° 28'	10.90	
0210-0211	72° 27'	13.79	
0212-0213	50° 07'	10.82	
0214-0215	176° 57'	14.27	
0216-0217	144° 55'	9.12	
0218-0219	116° 47'	20.78	
0220-0221	172° 41'	9.85	
0222-0223	74° 14'	8.88	
0224-0225	31° 36'	14.08	
0226-0227	126° 16'	17.11	
0228-0229	148° 20'	14.92	12.00
0230-0231	73° 12'	14.34	12.00
0232-0233	15° 01'	12.52	34.02
0234-0235	157° 20'	31.42	
0236-0237	125° 19'	32.26	
0238-0239	124° 48'	18.85	25.40
0240-0241	154° 44'	24.64	
0242-0243	03° 27'	24.08	
0244-0245	04° 10'	22.02	12.30
0246-0247	28° 31'	24.30	12.15
0248-0249	58° 05'	5.72	
0250-0251	172° 43'	22.16	
0252-0253	172° 43'	20.13	
0254-0255	76° 07'	12.22	
0256-0257	34° 41'	7.36	



LOCATION

The property is on the north-eastern side of a road reserve about 0.3-kilometre in a northerly direction from electricity light pole No. 52. This road reserve runs off M1 Ring Road and connects to Ciperio Road at Borde Narve Village.

SERVICES AND AMENITIES

Water and Electricity:	Mains available about 0.3-kilometre away
Telephone:	Mains available on Manahambre Road
Road:	Asphalt-paved
Sewerage:	Septic tank and soakaway
Distance to Public Transportation, Schools and Shopping Facilities:	Within easy reach
Distance to Places of Worship and Recreational Facilities:	Within easy reach