

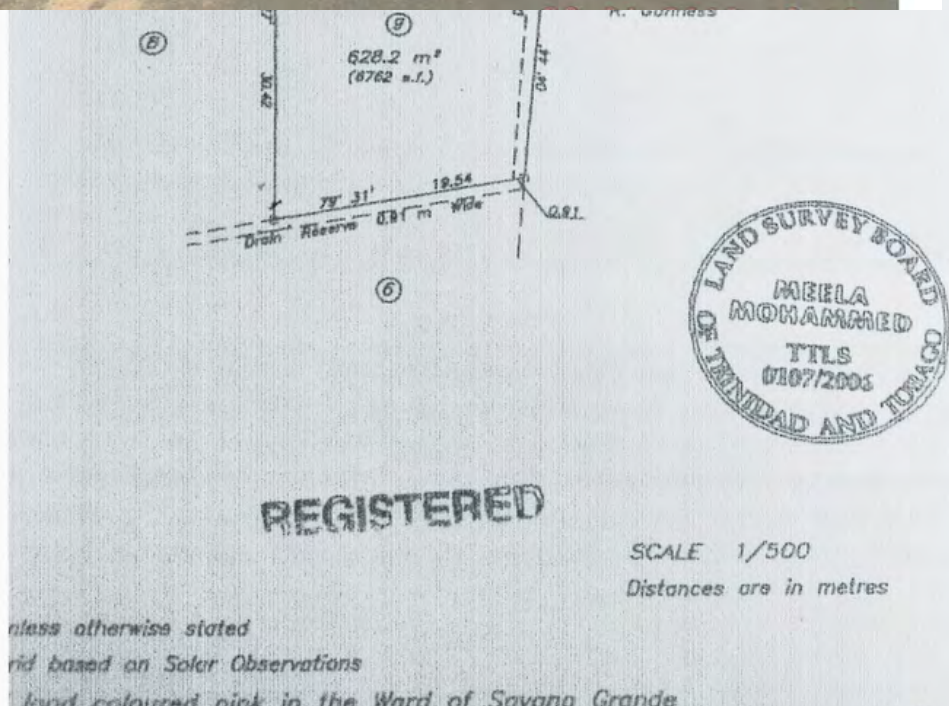


Agricultural Development Bank
Growing stronger together

IN-HOUSE ADVERTISEMENT-

Two (2) Contiguous Parcels of Freehold Land, The First comprising 11,439 sq.ft. and the second comprising 6,762 sq.ft. situated at Lot Nos. 6 & 9 Jagville Avenue, St. Julien Village, PRINCES TOWN

SURVEY PLAN





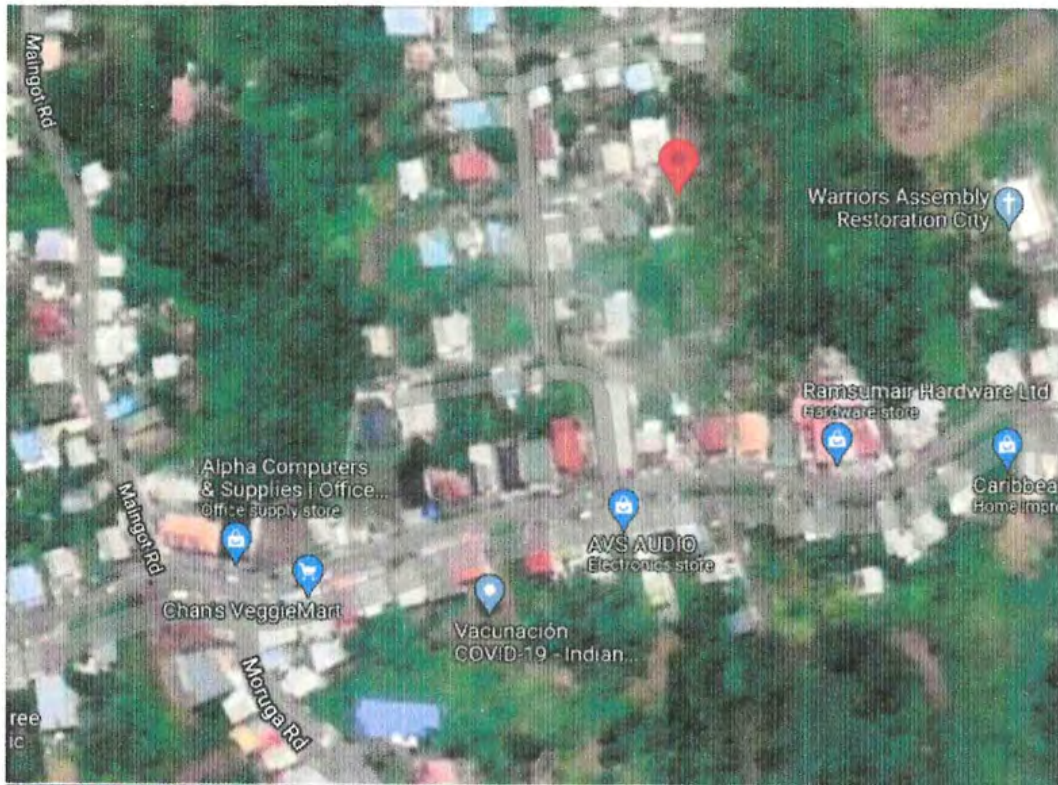
Agricultural Development Bank
Growing stronger together

IN-HOUSE ADVERTISEMENT-

Two (2) Contiguous Parcels of Freehold Land, The First comprising 11,439 sq.ft. and the second comprising 6,762 sq.ft. situated at Lot Nos. 6 & 9 Jagville Avenue, St. Julien Village, PRINCES TOWN

G.P. LOCATION MAP

10.274669, -61.336668





Agricultural Development Bank
Growing stronger together

IN-HOUSE ADVERTISEMENT-

Two (2) Contiguous Parcels of Freehold Land, The First comprising 11,439 sq.ft. and the second comprising 6,762 sq.ft. situated at Lot Nos. 6 & 9 Jagville Avenue, St. Julien Village, PRINCES TOWN



SITE VIEW



Agricultural Development Bank
Growing stronger together

IN-HOUSE ADVERTISEMENT-

Two (2) Contiguous Parcels of Freehold Land, The First comprising 11,439 sq.ft. and the second comprising 6,762 sq.ft. situated at Lot Nos. 6 & 9 Jagville Avenue, St. Julien Village, PRINCES TOWN



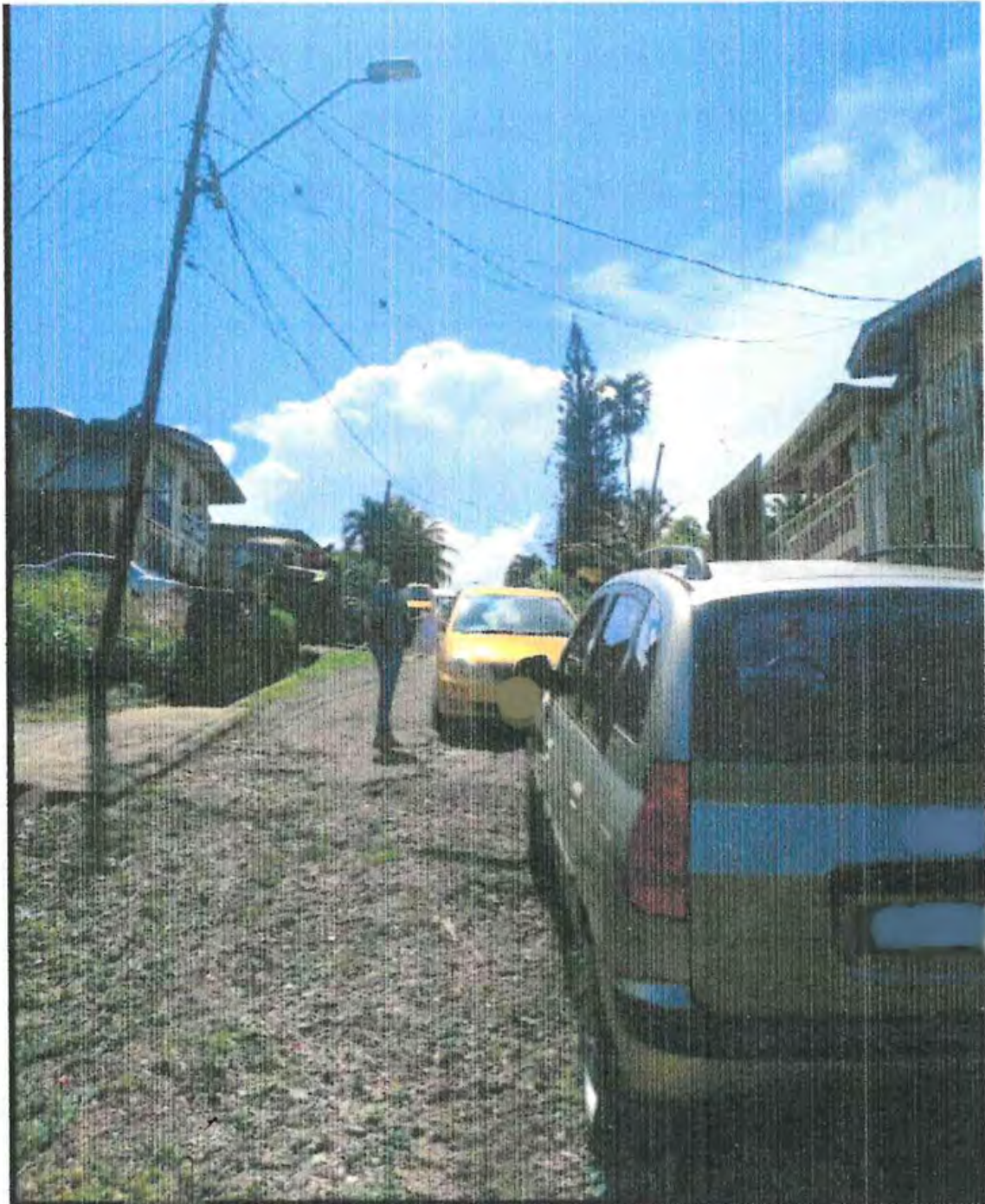
ROAD VIEW LOOKING EAST



Agricultural Development Bank
Growing stronger together

IN-HOUSE ADVERTISEMENT-

Two (2) Contiguous Parcels of Freehold Land, The First comprising 11,439 sq.ft. and the second comprising 6,762 sq.ft. situated at Lot Nos. 6 & 9 Jagville Avenue, St. Julien Village, PRINCES TOWN



ROAD VIEW LOOKING WEST