



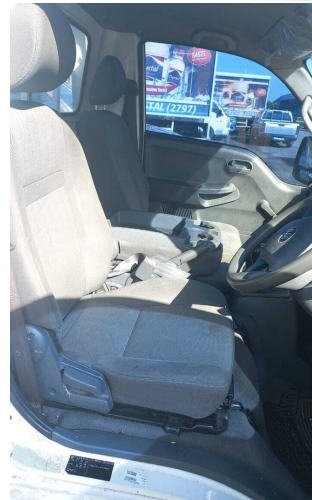
**Agricultural  
Development  
Bank**  
*Growing stronger together*

# CHATTEL SALE



**Make: Kia**  
**Model: K-2700 2dr. 4x4 Pick-up**  
**Colour: White**  
**Registration No: TDW**  
**Year of Manufacture: 2019**  
**Mileage: 122,541 km**  
**Engine: 2.7 Liter, 4 Cylinder**  
**Transmission: Manual**  
**Tyres: 195/14 (Front) & 5.00/12 (Rear)**

**Bid Fee: \$200.00**







**Agricultural  
Development  
Bank**  
*Growing stronger together*

# CHATTEL SALE



**Make: Nissan**  
**Model: NP300 Frontier SE 4dr. 4x2**  
**Colour: Grey**  
**Registration No: TDM**  
**Year of Manufacture: 2016**  
**Mileage: 158,347 km**  
**Engine: 2.5 Liter, 4 Cylinder**  
**Transmission: 6 Speed Manual/  
Turbo/Intercool**  
**Tyres: Aplus 265/65/16**



**Bid Fee: \$200.00**





**Agricultural  
Development  
Bank**  
*Growing stronger together*

# CHATTEL SALE



**Make: Ford**

**Model: Ranger Hi-Rider XLT 2WD 4dr.**

**Colour: Silver**

**Registration No: TDP**

**Year of Manufacture: 2016**

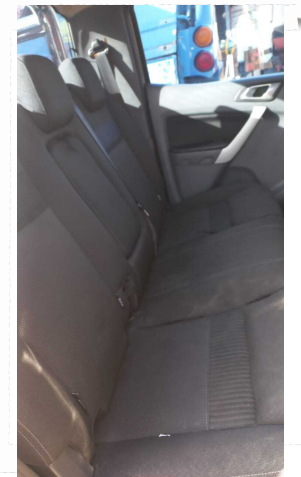
**Mileage: 153,759 km**

**Engine: 2.2 Liter, 4 Cylinder**

**Transmission: Tip Tronic / Turbo /  
Intercool**

**Tyres: Aplus 275/65/17**

**Bid Fee: \$200.00**







**Agricultural  
Development  
Bank**  
*Growing stronger together*

# CHATTEL SALE



**Make: Kia**  
**Model: K2700 2dr. Pick-up**  
**Colour: White**  
**Registration No: TDT**  
**Year of Manufacture: 2018**  
**Mileage: 127,532 km**  
**Engine: 2.7 Liter, 4 Cylinder**  
**Transmission: 5 Speed Manual**  
**Tyres: Fullrun 195/14 (front) & 155/12 (rear)**

**Bid Fee: \$200.00**







**Agricultural  
Development  
Bank**  
*Growing stronger together*

# CHATTEL SALE



**Make: Kia**  
**Model: K-2700 2dr. 4x4 Pick-up**  
**Colour: White**  
**Registration No: TDW**  
**Year of Manufacture: 2019**  
**Mileage: 122,541 km**  
**Engine: 2.7 Liter, 4 Cylinder**  
**Transmission: Manual**  
**Tyres: 195/14 (Front) & 5.00/12 (Rear)**



**Bid Fee: \$200.00**





**Agricultural  
Development  
Bank**  
*Growing stronger together*

# CHATTEL SALE



**Make: Hyundai**  
**Model: H-100 2dr. Pick-up**  
**Colour: White**  
**Registration No: TDW**  
**Year of Manufacture: 2018**  
**Mileage: n/a**  
**Engine: 2.6 Liter, 4 Cylinder**  
**Transmission: 5 Speed Manual**  
**Tyres: 205/60/15**

**Bid Fee: \$200.00**





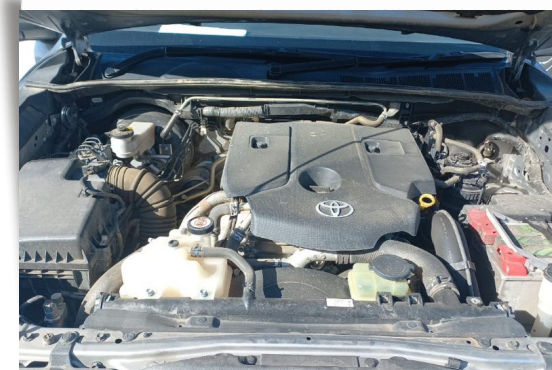


**Agricultural  
Development  
Bank**  
*Growing stronger together*

# CHATTEL SALE



**Make: Toyota**  
**Model: Hilux 4dr. 4x4 Pick-up**  
**Colour: Silver**  
**Registration No: TDY**  
**Year of Manufacture: 2019**  
**Mileage: 70,694 km**  
**Engine: 2.4 Liter, 4 Cylinder**  
**Transmission: Automatic / Turbo / Intercool**  
**Tyres: Powertrac 265/70/17**



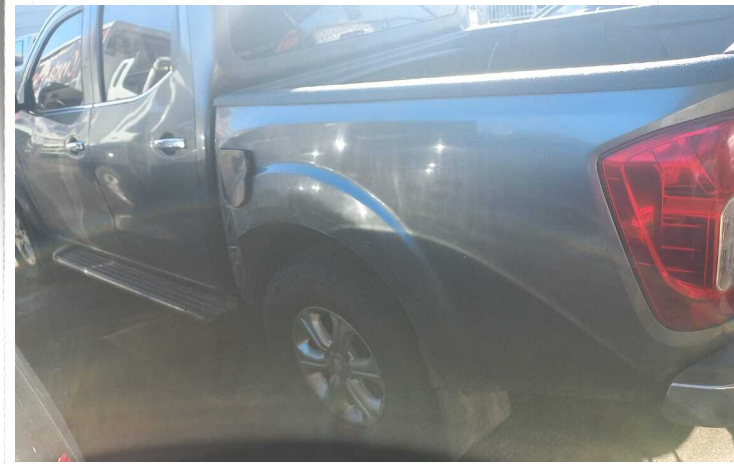
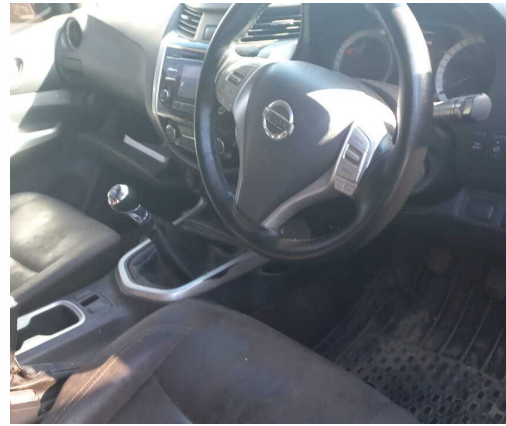
**Bid Fee: \$400.00**





**Agricultural  
Development  
Bank**  
*Growing stronger together*

# CHATTEL SALE



**Make: Nissan**  
**Model: Frontier NP300**  
**Colour: Grey**  
**Registration No: TDW**  
**Year of Manufacture: 2018**  
**Mileage: 199,628 km**  
**Engine: 2.5 Liter, 4 Cylinder, Turbo,  
Intercooled**  
**Transmission: Manual**  
**Tyre: 275/70/16**

**Bid Fee: \$200.00**







**Agricultural  
Development  
Bank**  
*Growing stronger together*

## **CHATTEL SALE**

**Make: New Holland**  
**Model: TL95E Wheel Tractor**  
**Colour: Blue**  
**Registration No: TDW 3956**  
**Year of Manufacture: 2017**  
**Hours: 1695 Hrs.**

**Bid Fee: \$400.00**







**Agricultural  
Development  
Bank**  
*Growing stronger together*

# CHATTEL SALE



**Make: Menex Rotary Brushcutter  
Model: RDMR 160RC  
Colour: Red**

**Bid Fee: \$200.00**





**Agricultural  
Development  
Bank**  
*Growing stronger together*

# CHATTEL SALE



**Make: MEC-RUL Rotavator  
Model: ER 225B  
Colour: Red**

**Bid Fee: \$200.00**





**Agricultural  
Development  
Bank**  
*Growing stronger together*

## **CHATTEL SALE**



**Make: Tatu Disc Plough**  
**Model: AF 2X26" X 6.00MM with Notched  
Disc, Blade and Depth Control Wheel**  
**Colour: Orange**

**Bid Fee: \$200.00**

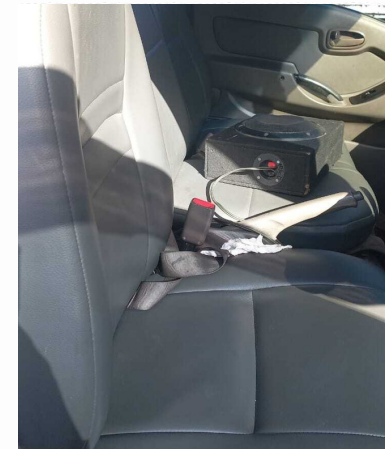


# CHATTEL SALE

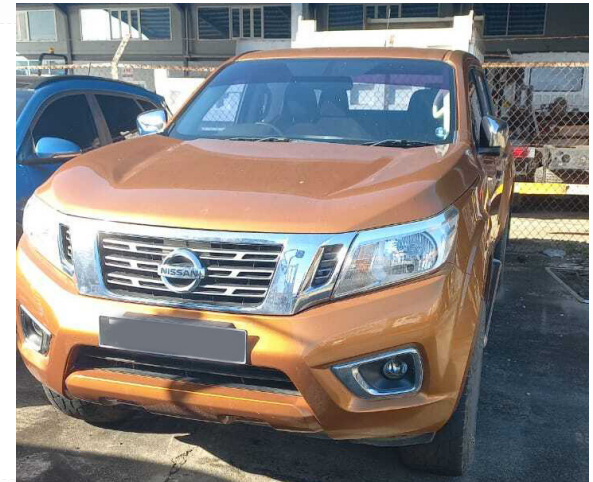
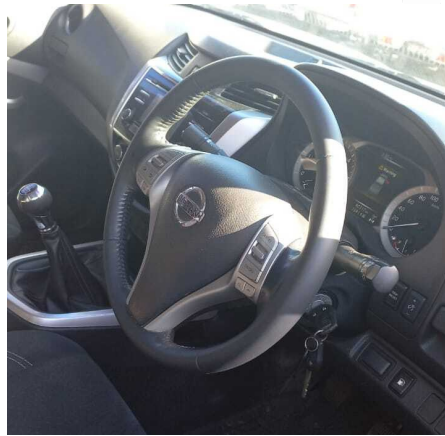
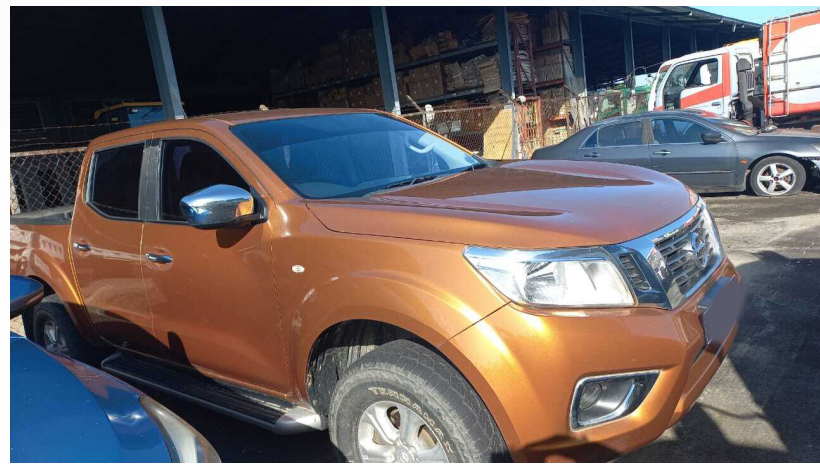


**Make: Hyundai**  
**Model: H-100 2dr. Pick-up**  
**Colour: White**  
**Registration No: TDW**  
**Year of Manufacture: 2018**  
**Mileage: 199,655 km**  
**Engine: 2.6 Liter, 4 Cylinder**  
**Transmission: Manual**  
**Tyres: 215/70/15 (Front) & 225/70/15 (Rear)**

**Bid Fee: \$200.00**

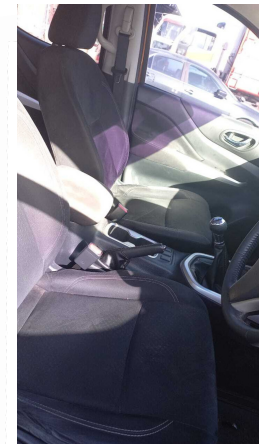


# CHATTEL SALE



**Make: Nissan**  
**Model: NP300 Frontier XE 4dr. 4x4 Pick-up**  
**Colour: Orange**  
**Registration No: TDX 1000**  
**Year of Manufacture: 2019**  
**Mileage: 90,317 km**  
**Engine: 2.5 Liter, 4 Cylinder, Turbo, Intercool**  
**Transmission: Manual**  
**Tyres: Sailun 275/70/16**

**Bid Fee: \$200.00**

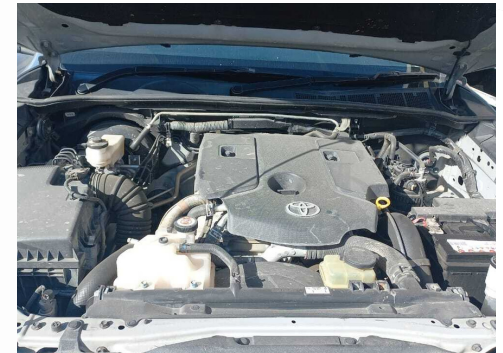




# CHATTEL SALE



**Make: Toyota**  
**Model: Hilux SRV 4dr. 4x4 Pick-up**  
**Colour: Silver**  
**Registration No: TDY**  
**Year of Manufacture: 2019**  
**Mileage: 66,893 km**  
**Engine: 2.8 Liter, 4 Cylinder, Turbo, Intercooled**  
**Transmission: Tip Tronic**  
**Tyre: Sailun 265/60/18**



**Bid Fee: \$400.00**

## CHATTEL SALE



**Make: Kubota**  
**Model: L3200D Wheel Tractor**  
**Colour: Orange**  
**Registration No: TDY**  
**Year of Manufacture: 2017**  
**Hours: 171 Hrs.**

**Bid Fee: \$200.00**





# CHATTEL SALE



**Make: Land Pride 48" Brushcutter**  
**Model: Slip-Clutch, FRT & Rear Gua**  
**Colour: Orange**

**Bid Fee: \$200.00**

# CHATTEL SALE



**Make: ETA 48" Rotary Tiller**

**Model: 18-39 HP**

**Colour: Red**

**Bid Fee: \$200.00**



# CHATTEL SALE



**Make: 22" Tuffline 2 Disc Plough**  
**Model: 665 Lbs C/W Gauge Wheel**  
**Colour: Black**

**Bid Fee: \$200.00**



# CHATTEL SALE



**Make: Hyundai**  
**Model: H-100 2dr. Pick-up**  
**Colour: White**  
**Registration No: TEB 4435**  
**Year of Manufacture: 2020**  
**Mileage: 127,451 km**  
**Engine: 2.6 Liter, 4 Cylinder**  
**Transmission: Manual**  
**Tyres: Luhe 225/70/15**

**Bid Fee: \$200.00**





# CHATTEL SALE



**Make: Kia**  
**Model: K-2700 2dr. 4x4 Pick-up**  
**Colour: White**  
**Registration No: TEC**  
**Year of Manufacture: 2022**  
**Mileage: 42,189 km**  
**Engine: 2.7 Liter, 4 Cylinder**  
**Transmission: Manual**  
**Tyres: 195/14 (Front) & 7.00/12 (Rear)**



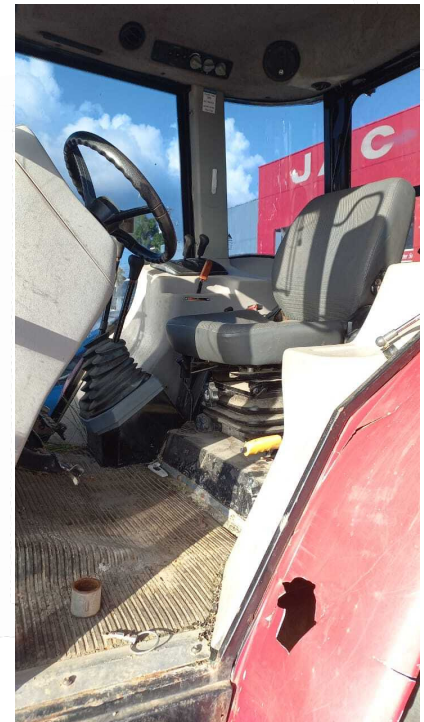
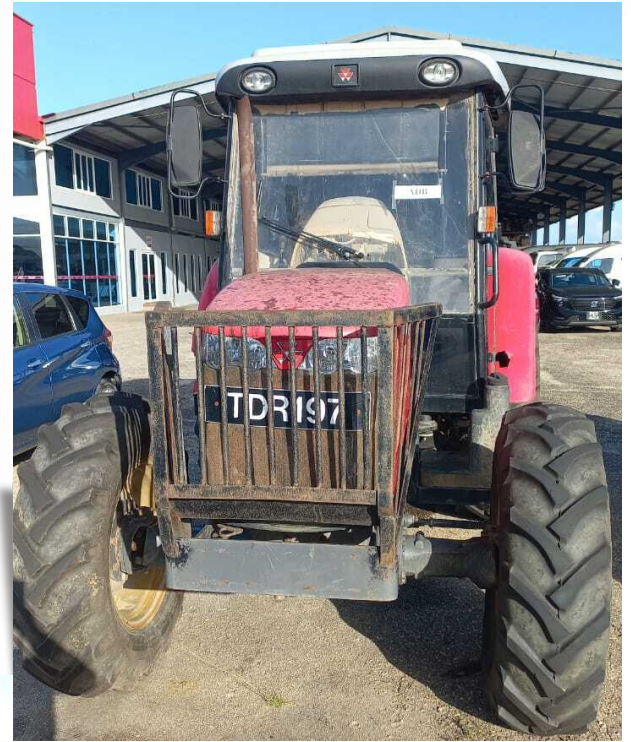
**Bid Fee: \$200.00**



# CHATTEL SALE

**Make: Massey Ferguson**  
**Model: 4283 Wheel Tractor**  
**Colour: Red**  
**Registration No: TDR 197**  
**Year of Manufacture: 2016**  
**Hours: 2,700**

**Bid Fee: \$400.00**





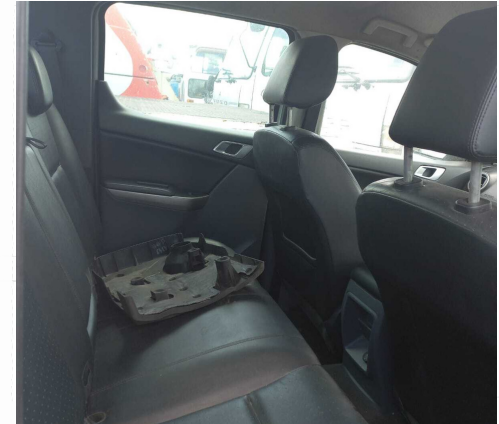
# CHATTEL SALE



**Make: Ford**  
**Model: Ranger 4x4 Pick Up**  
**Colour: White**  
**Registration No: TDS**  
**Year of Manufacture: 2017**  
**Mileage: 136,177 km**  
**Engine: 2.2 Liter, 4 Cylinder**  
**Transmission:**  
**Manual / Turbo, Intercool**  
**Tyres: Aplus 265/70/16**

**Bid Fee: \$200.00**

# CHATTEL SALE



**Make: Mazda**  
**Model: BT 50 4x4 Pick-up**  
**Colour: White**  
**Registration No: TDP**  
**Year of Manufacture: 2016**  
**Mileage: 262,299 km**  
**Engine: 2.2 Liter, 4 Cylinder**  
**Transmission:**  
**Automatic / Turbo, Intercool**  
**Tyres: Powertrac 275/55/20**

**Bid Fee: \$200.00**



# CHATTEL SALE

**Make: Mazda**  
**Model: BT 50 4x4 Pick-up**  
**Colour: Silver**  
**Registration No: TEB**  
**Year of Manufacture: 2021**  
**Mileage: 14,359 km**  
**Engine: 2.2 Liter, 4 Cylinder**  
**Transmission:**  
**Tip Tronic / Turbo, Intercool**  
**Tyres: Dunlop 265/65/17**

**Bid Fee: \$400.00**





# CHATTEL SALE

**Engine Type:** Cumming  
**6 cylinders Marine Inboard**  
**Fuel:** Diesel  
**Series:** QSB5-9230H  
**Horsepower:** 230 HP at 2600 RPM or  
172 K, W at 2600 RPM  
**Manufactured Date:** 09/09/2013

**Bid Fee: \$200.00**

